

North - state plane

North - Eden Descr. - Ala. Co. 602-29

Per Eden { #10 to #53 - N33°00'13"E, 4494.70
 #10 to #50 - N33°15'21"E, 4070.94 } Rotate 2°38'26"

NO. 10 TO NO. 53 4492.21 N 35°38'39"E GRID
 4492.60 GROUND

0.99991119
1500

Sdist = 2.10

0.99991310

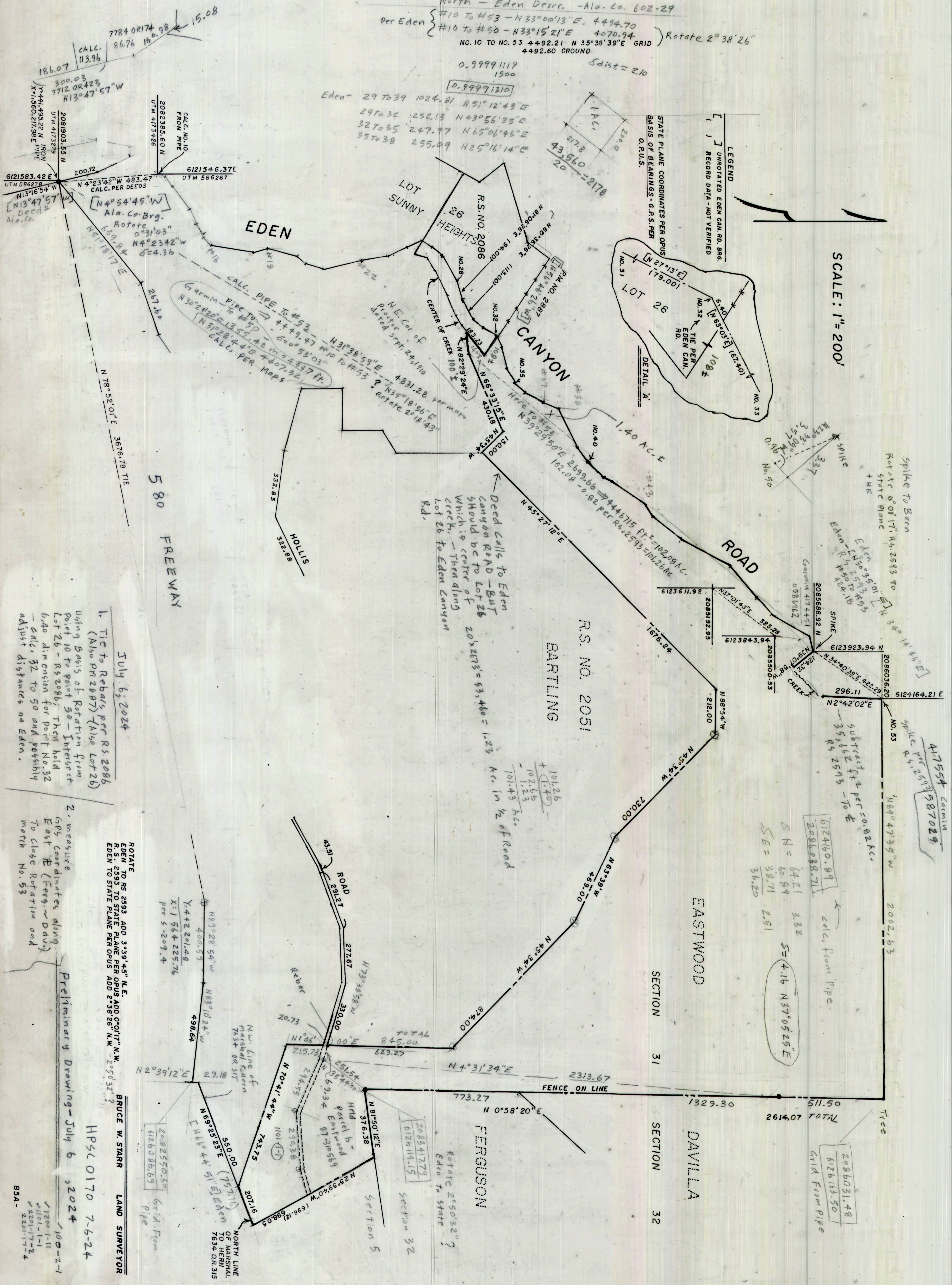
Eden - 29 to 39 1024.61 N 51°12'43"E
 29 to 32 252.13 N 43°56'35"E
 32 to 35 247.97 N 65°06'46"E
 35 to 38 255.09 N 25°16'14"E

LEGEND

[] UNROTATED EDEN CAN. RD. BRG.
 () RECORD DATA - NOT VERIFIED

STATE PLANE COORDINATES PER OPUS
 BASIS OF BEARINGS - G.P.S. PER
 O.P.U.S.

SCALE: 1"=200'



Eden
 R.S. NO. 2086
 LOT SUNNY HEIGHTS

CANYON
 R.S. NO. 2051

580
 FREEWAY

ROAD

BARTLING

EASTWOOD

SECTION 31

DAVILLA

SECTION 32

FERGUSON

July 6, 2024
 1. Tie to Rebars per R.S. 2086 (Also PH 2887) (Also Lot 26)
 Using Basis of Rotation from Point 10 to point 50 - Intersect Lot 26 - R.S. 2086. Then hold 6.40 dimension for point No. 32 - calc. 32 to 50 and possibly adjust distances on Eden.

2. measure GPS coordinates along East R (Feeg, Dav) To Close Rotation and match No. 53

Eden - 29 to 39 1024.61 N 51°12'43"E
 29 to 32 252.13 N 43°56'35"E
 32 to 35 247.97 N 65°06'46"E
 35 to 38 255.09 N 25°16'14"E

ROTATE
 EDEN TO RS 2993 ADD 3°39'45" N.E.
 R.S. 2993 TO STATE PLANE PER OPUS ADD 0°01'11" N.W.
 EDEN TO STATE PLANE PER OPUS ADD 2°38'26" N.W. - 2°51'32"

BRUCE W. STARR
 LAND SURVEYOR
 HPSC 0170 7-6-24

1000-2-1
 11200-1-11
 11101-1-1
 12201-17-2
 2201-17-4
 85A-

417554
 587029
 Calculated
 1890 47.35 W
 2002.63

S N = 64.21
 S E = 38.71
 34.20

6124160.89
 2086038.71
 calc. from pipe

2086031.48
 6126153.50
 Grid From Pipe

Spike to Barn
 Rotate 0° 01' 17.84 2593 TO
 State Plane
 + NE

Eden - R.S. 2086
 #50 to #53
 424.16

Spike
 337
 357
 357
 357

Subtract pt 2 per = 0.02 Ac.
 35.16 Z ft = 0.02 Ac.

2086031.48
 6126153.50
 Grid From Pipe

2086031.48
 6126153.50
 Grid From Pipe

Eden - R.S. 2086
 #50 to #53
 424.16

Spike
 337
 357
 357
 357

Subtract pt 2 per = 0.02 Ac.
 35.16 Z ft = 0.02 Ac.

2086031.48
 6126153.50
 Grid From Pipe

2086031.48
 6126153.50
 Grid From Pipe

2086031.48
 6126153.50
 Grid From Pipe