



\$12,500,000 | 333 ± ACRES | MONTEREY COUNTY

# BOEKENOOGEN

SANTA LUCIA HIGHLANDS VINEYARD





## ADDRESS

33520 FAIRVIEW ROAD  
SOLEDAD, CALIFORNIA



## COORDINATES

36.4415582N, 121W

## LOCATION/DIRECTIONS

SOUTH OF SALINAS, TURN OFF HWY 101 IN  
GONZALES ONTO S. ALTRA ST.,  
WEST ON GONZALES RIVER RD.,  
S. ON RIVER RD., RIGHT ON FAIRVIEW.  
PROPERTY IS AT THE END OF THE ROAD BEHIND  
LOCKED GATE.

## TAXES

\$45,753/YEAR







# PROPERTY DESCRIPTION

Nestled on the edge of Santa Lucia Highlands, overlooking the fertile Salinas Valley lays this 333+/- acre holding that has been in the same family since the mid-1800s.

Santa Lucia Highlands is a world-renowned Appalachian known for its cool climate style of Pinot Noir. This ranch is one of the few wineries that produce and bottle on-site in the Santa Lucia Highlands.

The vineyard was established in 1997 when the owner realized the property's true potential. Taking the cattle ranch that had been in the family for five generations and transforming it into the vineyard it is today, which produces exceptionally high-quality wine grapes.



# PROPERTY DETAILS

*continued*

Developing all phases of the vineyard, from ground preparation, rootstock, clone selection, trellising, pruning, and shoot positioning to canopy management, color thinning, and irrigation.

Through all the hard work, expert attention, perfect clones, rocky soils, and the moderating coastal climate of the Highlands, Boekenoogen Vineyard became one of the finest in this appellation, producing about three to four tons per acre of high-quality fruit. In 2006, the family decided to produce their own wines and constructed a boutique-style winery on the property.

Currently producing premium Pinot Noir and Chardonnay, which reflect the characteristics of the Santa Lucia Highlands known for its fruit-forward, elegant style of wine. There are 90 +/- acres planted in Pinot Noir and Chardonnay. In addition, there is a 5-acre block of dry land Pinot Noir, which quickly became one of the family's bestselling wines.

Privacy is at a premium with the ranch located at the end of the road, entering through electronic gates. This is one of the many desirable characteristics of the ranch, along with the unobstructed views of the valley and distant mountains.

This also creates a fantastic venue for weddings and events. The improvements include two homes, the winery building, which holds the fermentation/storage tanks, barrel storage, office, case storage building, equipment storage building, shop, pole barn, and tack room.

This is a well-laid-out operation, neat and clean. The vineyard is under a drip irrigation system. The remainder of the ranch is used for cattle grazing and horses. Bordering BLM lands on one side enhances the hunting opportunities on the ranch, which include deer, bear, wild boar, turkey, and more. This unique ranch is ready for the new owner to enjoy coastal temperatures and the tranquility and beauty of living at the base of Santa Lucia Highlands.







# PROPERTY HIGHLIGHTS

— • ◆ • —  
333.72 ACRES INCLUDES 7 PARCELS

- 417-141-001            22.5 acres
- 417-141-003            82.74
- 417-141-033           108.8
- 417-141-034            .05
- 417-141-035            .37
- 417-141-036           39.26
- 417-141-037            80





# THE *Vineyard*

- 
- VINEYARD - 95 AC PLANTED
  - 55 ACRES IN PINOT NOIR
  - 35 ACRES IN CHARDONNAY
  - 5 ACRE BLOCK OF DRY LAND PINOT NOIR
  - LAID OUT WITH NORTH TO SOUTH VERTICAL SHOOT POSITIONING (VSP)
  - THREE IRRIGATION WELLS DESIGNED TO IRRIGATE THE DRIP SYSTEM.
  - INTRICATELY PLACED DRAIN CATCH BOXES TO CONTROL EROSION.
  - THE VINEYARD IS FULLY GAME FENCED









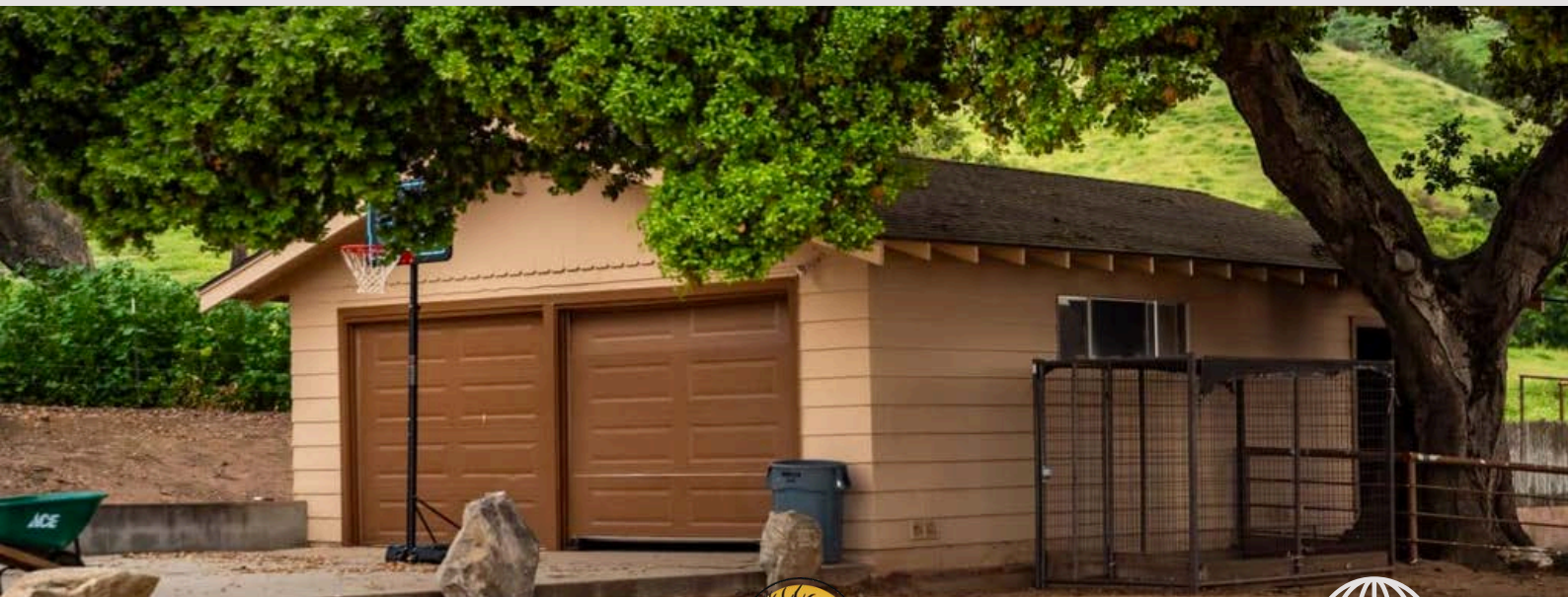


# MAIN *Home*

- BUILT IN 1954
- WOOD CONSTRUCTION, COMPOSITION ROOF
- 2000+/-SF, 3 BEDROOM, 2 BATH
- 780 +/-SF 2 CAR GARAGE, CONCRETE FLOOR, ELECTRIC GARAGE DOOR
- UNOBSTRUCTED VIEWS
- WOOD CONSTRUCTION, NEWER COMPOSITION ROOF









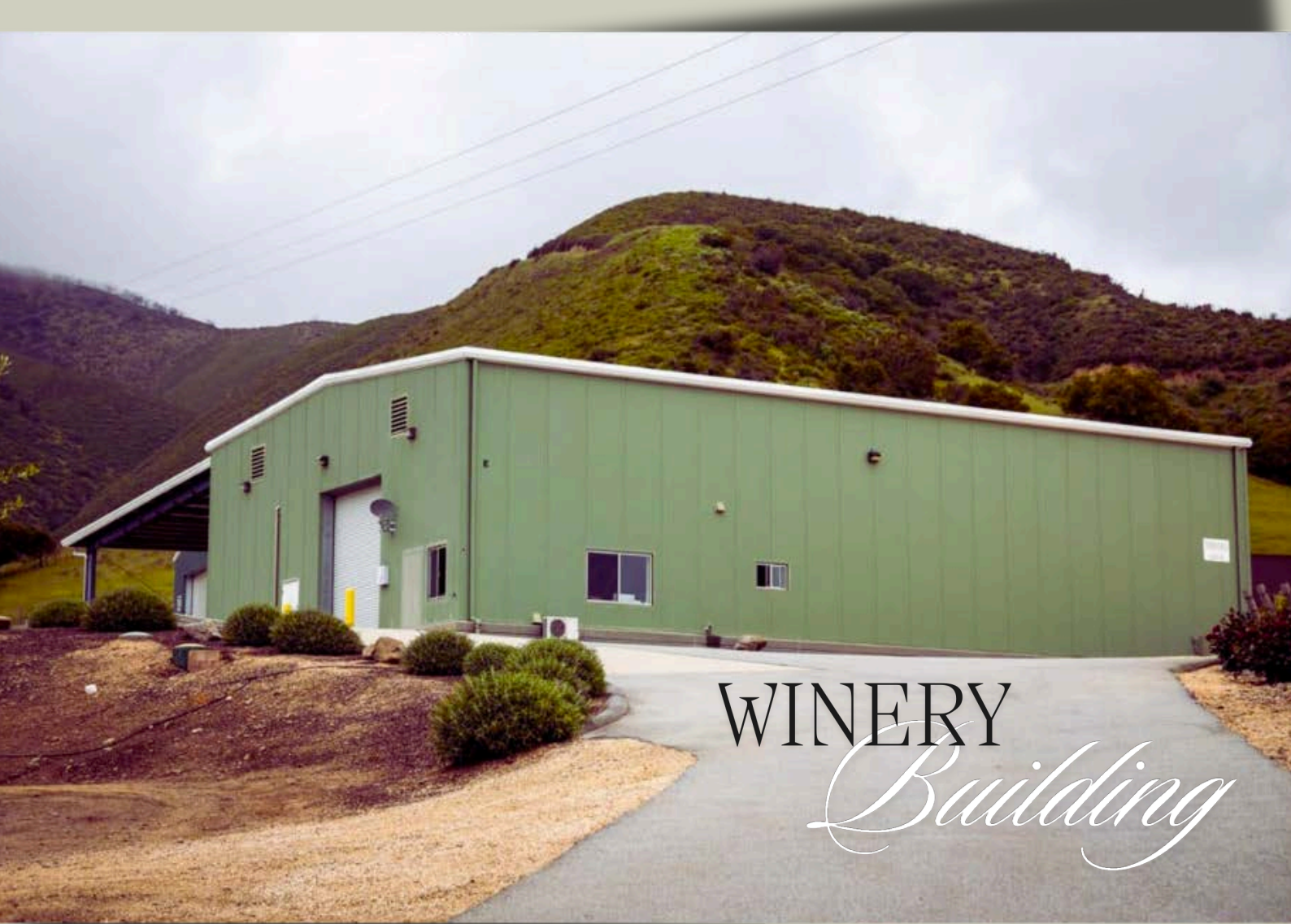


# SECOND *Home*

- BUILT IN 1961
- 1380+/-SF, 2 BEDROOM, 2 BATH
- 563+/-SF 2 CAR GARAGE, CONCRETE FLOOR, ELECTRIC GARAGE DOOR
- UNOBSTRUCTED VIEWS





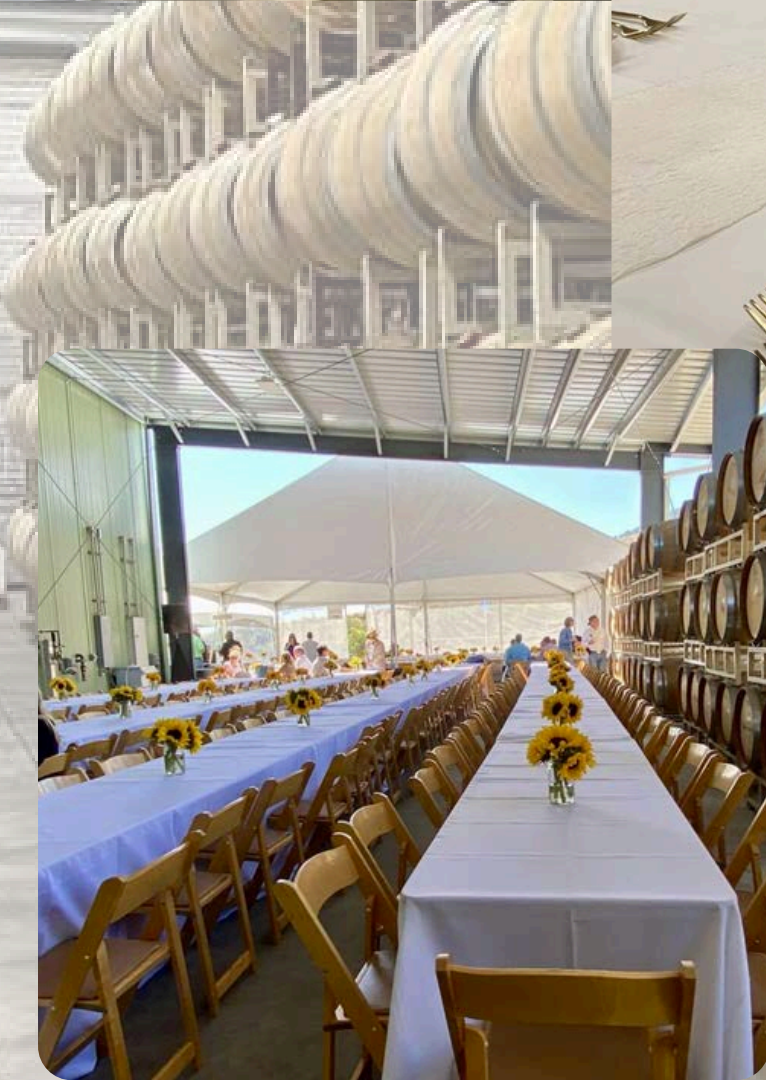
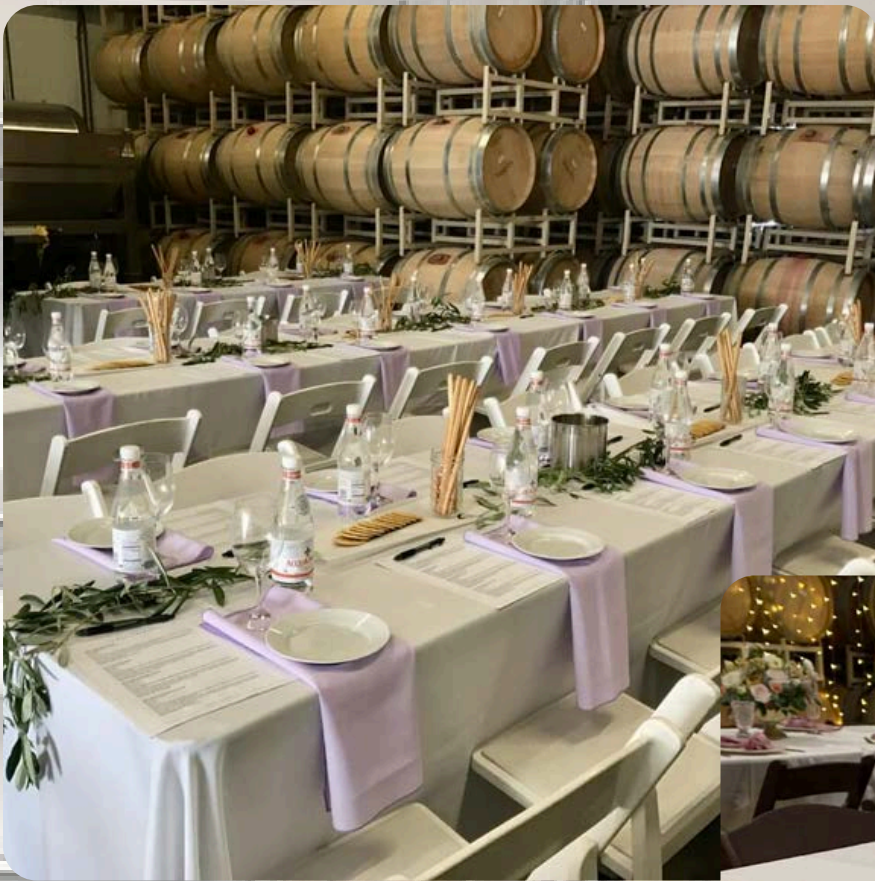


# WINERY *Building*

- 
- Metal construction, temperature controlled
  - 54 x 80 - 4320 SF two story in height
  - 35 x 80 overhang (used as crush equipment area, no equipment available)
  - Concrete floors
  - Office
  - ½ bath with storage
  - Custom temperature controlled stainless tanks vary to fit your grape harvest or bottling needs
  - Custom catwalk, cooling system and mobile bottling line pad
  - Three 18' roll up doors, one on each end plus man door into office and building.
  - Paved drive and parking area











#### WINE STORAGE BUILDING

Metal construction, temperature controlled

25 x 30 - 750 SF two story in height

Concrete floor

12' roll up door plus man door

This building has been used for wine case storage

#### SHOP

Metal construction

38 x 50 - 1900 SF

Slider doors

Concrete Floor

#### EQUIPMENT STORAGE BARN

Metal construction

38 X 50 - 1900 SF

Open ended

Gravel floor

#### POLE BARN

Wood and treated pole construction, metal roof

75 X 30 - 2,250 SF

Gravel area under roof

Used for hay and or equipment storage







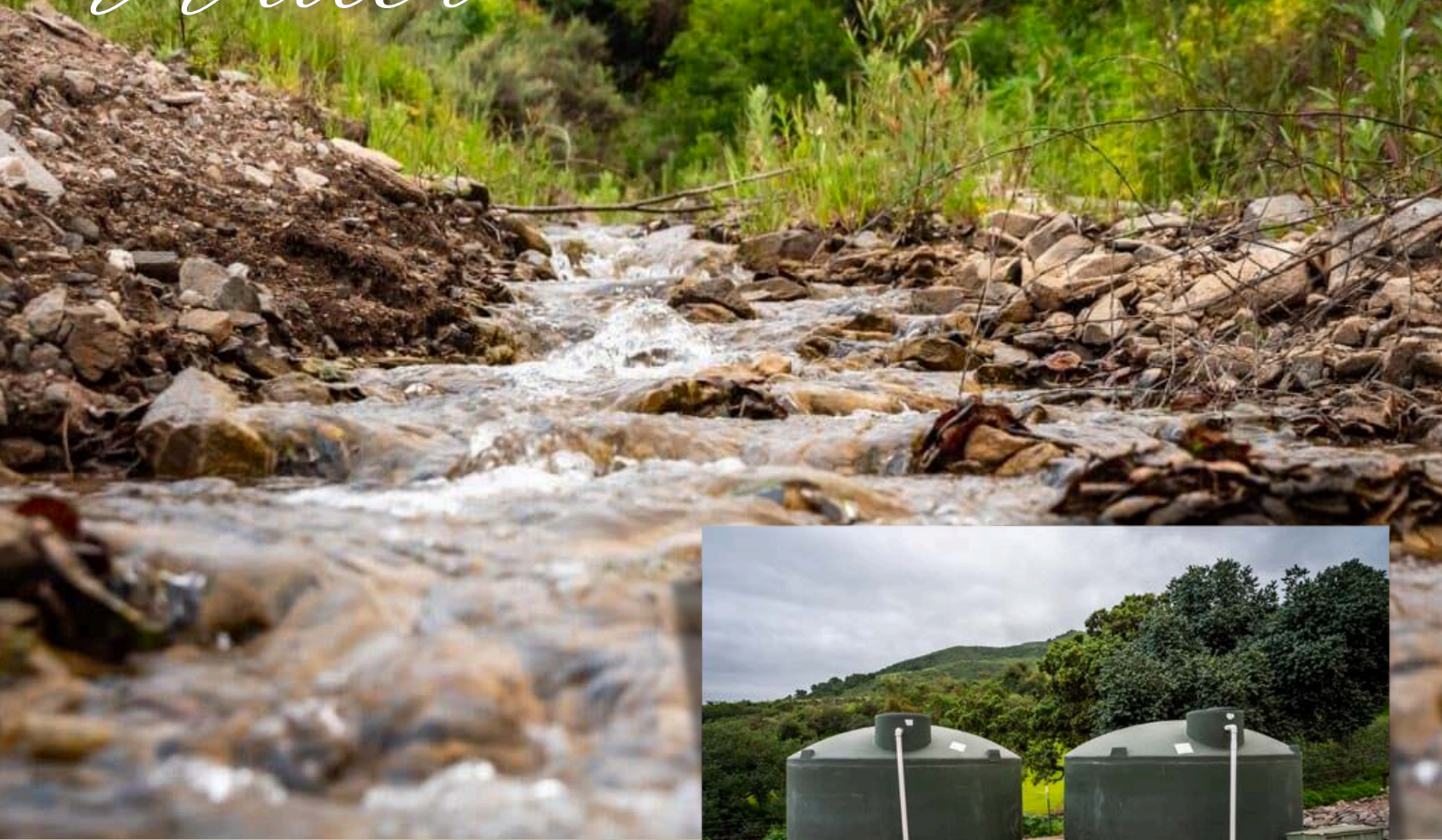
## TACK ROOM

- Shipping container turned into tack room
- 8 x 20 - 160 SF
- Wood floor inside, gravel/dirt under roof overhang
- Roof overhang on both sides
- Used for tack and grain/feed storage





# Water



- Four wells on the ranch
- Main well is artesian, pumping 300 GPM first of season and slowing down to about 175 GPM in the Fall
- Two wells have diesel generators, pumping up to the holding tanks and gravity flow to the crops for irrigation
- Several valves to move water around the vineyard in the underground pipe system
- 35-40 catch boxes strategically placed throughout the vineyard to prevent erosion
- There is a spring (is this the artesian well?) and seasonal creek





IN  
*Addition*



Three sets of solar panels help offset power costs and are tied to all structures with power

\*8 acre horse pasture behind homes.

\*Decorative olive orchard, garden area

\*The remaining acreage is used for cattle grazing, fully fenced

\*Property is in the Williamson Act Approximately 35 miles to Monterey, 39 miles to Carmel by the Sea and the ocean.

Pebble Beach and all the golf extravaganzas including the US open, with some of the greatest golf courses in the state, if not the entire US.

Upscale and unique shopping, great restaurants, resorts, fisherman's wharf, white sandy beaches and turquoise ocean waters.

All this and more for your enjoyment, yet, the ranch is far enough away to get out of the crowds, and the size gives you the feeling, and reality, that you are removed from it all with amazing privacy, unsurpassed views and Nature at its best.







California  Nevada  
OUTDOOR PROPERTIES



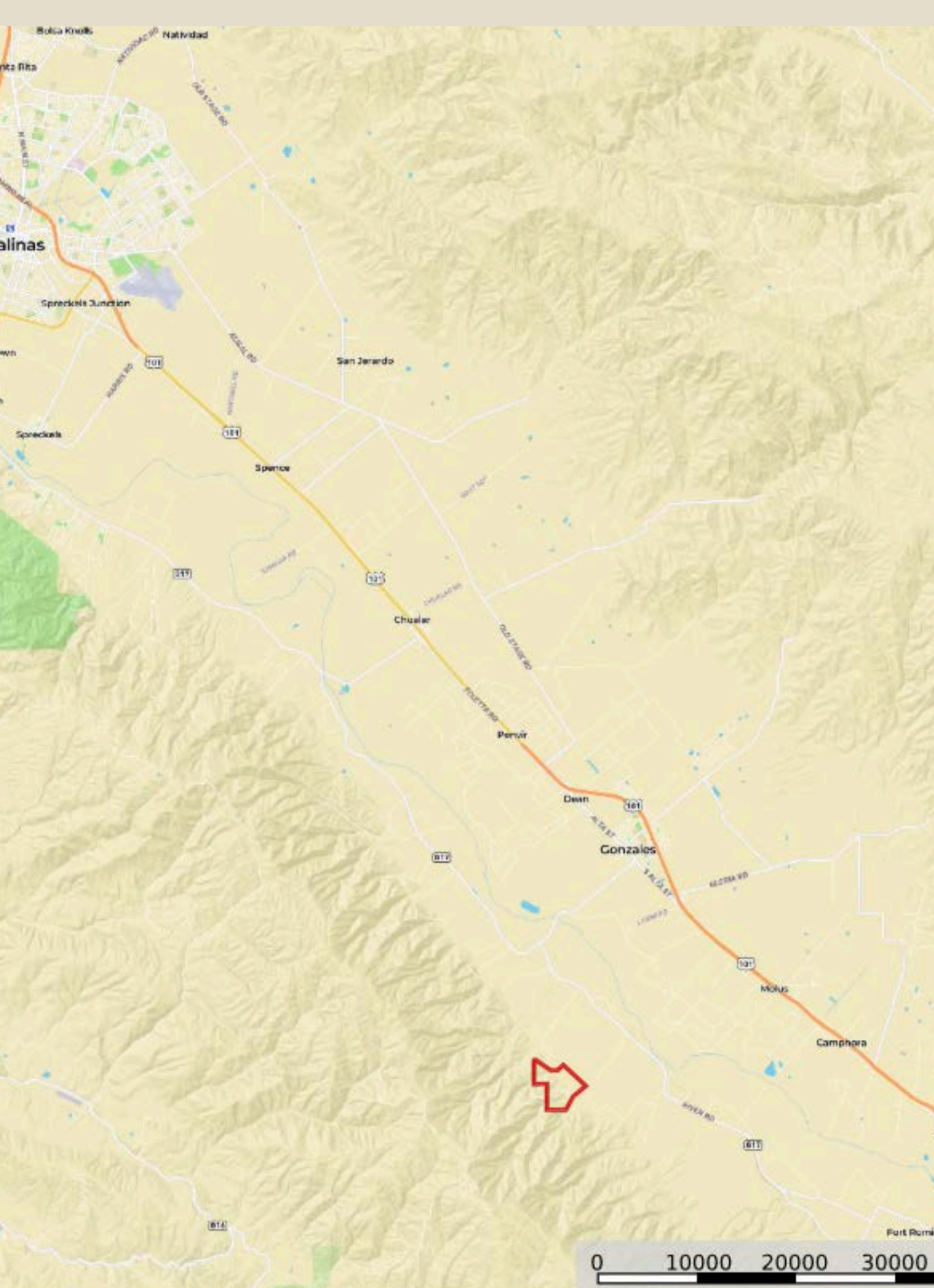
California  Nevada  
OUTDOOR PROPERTIES



California  Nevada  
OUTDOOR PROPERTIES













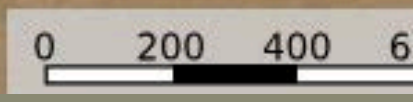






SANCHEZ RD

SANCHEZ RD







Jamesburg

FARMVIEW RD









Donna Utterback  
Real Estate Agent  
CA BRE 01199200  
530.604.0700



Denny Prins  
Real Estate Agent  
CA BRE 01989081  
530.410.5755



California Outdoor Properties Inc.  
707 Merchant Street, Suite 100  
Vacaville, California 95688

California Outdoor Properties, Inc is pleased to have been selected as the Exclusive Agent for the seller of this offering. All information has been obtained from sources deemed reliable by California Outdoor Properties, Inc. however, the accuracy of this information is not guaranteed or warranted by either California Outdoor Properties, Inc., the sellers, and prospective buyers are charged with making and are expected to conduct their own independent investigation of the information contained herein. This offering is subject to prior sale, price change, correction or withdrawal without notice and any offer presented does not have to be accepted.