

Las Lomas Ranch

Sonoma County, California

\$6,800,000 | 723.00 Acres

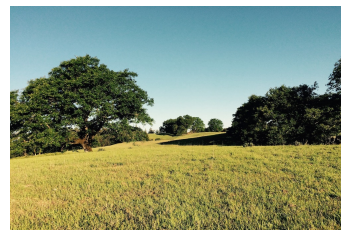
14900 Stewarts Point-Skaggs Spring Rd.
Healdsburg, California

Las Lomas is nestled in the majestic coastal mountains west of the bucolic town of Healdsburg. Ranging from rolling oaked studded hills to forested draws giving way to lush mountain meadows, Las Lomas stands apart for the useability and diversity of its topography. Awe inspiring mountain views out to the Pacific Ocean.



PROPERTY HIGHLIGHTS

- 723 +/- Acres with 8 Certificates of Compliance for each of the 8 Legal Parcels with big valley and mountain views out to the Pacific. Year-round access off the county-maintained road.
- 5 wells with over a 200 GPM flow plus undeveloped mountain springs throughout. Electricity & Phone at the property.
- Plans were created for 4 home sites with septic systems engineered and approved. Excellent road network through the ranch as well as hik



JIM MARTIN
 Real Estate Agent
 BRE# 01245738
 Cell: (707) 272-5507
molyneauxent@aol.com