

The Historic Kirkwood Victorian

Tehama County, California

\$549,000 | 1.40 Acres

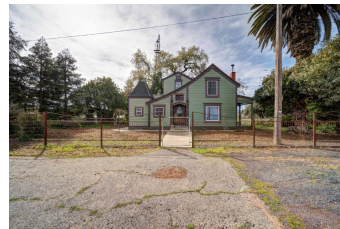
23485 I St
 Corning, California

This is a must-see! Located on 1.4 acres in the quiet community of Kirkwood, the historic and whimsical Kirkwood Post Office has been completely restored with era-appropriate finishes and details, right down to the original doorknobs and hinges.



PROPERTY HIGHLIGHTS

- 1919 5 bedroom, 2 bath, 1,844 sqft Victorian on 1.4 acres
- The house is the old post office for the community of Kirkwood with original mailboxes and mailroom intact
- Impeccable era-appropriate details, right down to the doorknobs and hinges
- The home has been renovated right down to the studs with new electrical, plumbing, roof, windows, HVAC, and insulation
- Custom slate flooring
- Romantic His and Hers outdoor bathtubs



SCOTT SODER
 Real Estate Agent
 BRE# 00984623
 Cell: (530) 727-7572
scottsoder@aol.com