

Willow Creek Ranch

Modoc County, California

\$575,000 | 86.00 Acres

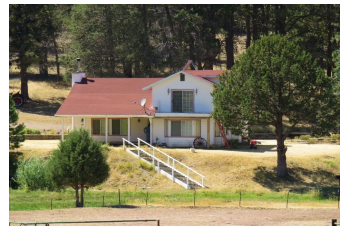
677-200 Lorna Lane
 Adin, California

This is one of the most peaceful settings you'll ever find. The ranch home sits on a rise, across the meadow with the creek flowing through the entire ranch, passing right in front of the beautiful 2 story home, with a mature stand of pines as the backdrop.



PROPERTY HIGHLIGHTS

- There are 2 barns and 2 shops. The largest barn is a 3720 sf. hay barn, and a 30 x 60 barn with corrals.
- Home is off the grid, with new solar system just installed.
- 1832 sf. with 3 bedrooms and 2 baths.
- There is a 58 x 40 sf. metal garage/shop with 3 roll up doors, concrete floor and metal roof.
- The second shop is a wooden 40 x 24 structure with a portion remodeled into a bunkhouse with kitchen and bath.



DONNA UTTERBACK

Real Estate Agent

BRE# 01199200

Office: (530) 336-6869

Cell: (530) 604-0700

fallriverproperties@frontiernet.net