

67317 Highway 70

Plumas County, California

\$510,000 | 91.29 Acres

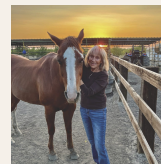
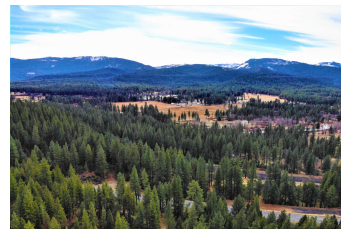
67317 Highway 70
Blairsden, California

91.29 Acres of gorgeous, healthy forest land with homesites. Close to Graeagle, Blairsden. The recently discovered 'Lost Sierra' including Lakes Basin. Unlimited recreation abounds with lakes, creeks, fishing, trails, golfing and scenic grandeur. Fine dining and shopping are close, and just an hour from Reno.



PROPERTY HIGHLIGHTS

- 91.29 Acres of gorgeous, healthy forest land.
- Choose one of the mapped homesites and just enjoy the rest as your own or subdivide the others.
- Topography varies but mostly gentle uphill at 4500' +/- elevation.
- South facing for maximum sunshine and views. The front 1/3 property is zoned R-10 and the back 2/3 is zoned R-20.
- Easily accessible from Hwy 70. Close to Graeagle, Blairsden, and the recently discovered 'Lost Sierra' including Lake



MARLENE BOGGS
Broker Associate
BRE# 01139616
Cell: (530) 412-2897
marleneboggs@gmail.com



PEGGI VERNON
Real Estate Agent
BRE# 02069320
Cell: (775) 225-8177
PeggiVernon@yahoo.com



SCOTT ULCH
Real Estate Agent
BRE# 01382010
Office: (775) 424-1952
Cell: (775) 240-3668
scottulch@sbcglobal.net