

## Betabel Road Farm

San Benito County, California

\$2,475,000 | 86.00 Acres

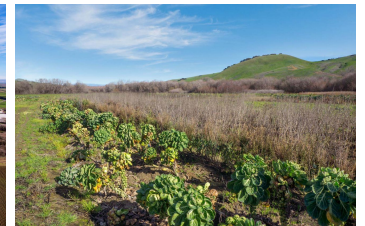
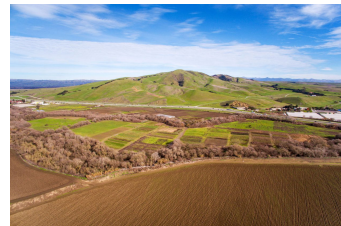
West Betabel Rd.  
 Hollister, California

86 acres in south San Benito County immediately adjacent to the U.S. Highway 101 corridor and just off the Betabel Y Road exit - 50,000+ cars per day. Residential or Commercial opportunities!



### PROPERTY HIGHLIGHTS

- Multiple Use potential!
- This farm would make a great equestrian riding or horse retirement facility. Only 35 minutes from San Jose and the South Bay Area. Or, it would support:
- Primary residence and/or farm - livestock grazing or equestrian property
- Continued produce farming - crops include: brussel sprouts, broccoli, garlic, cauliflower, cucumbers
- Commercial Use - Highway 101 frontage, seasonal farm-stand and many other busi



**CHRIS BAILEY**  
 Broker Associate  
 BRE# 01911018  
 Office: (831) 324-0174  
 Cell: (831) 277-8344  
[Chris@caoutdoorproperties.com](mailto:Chris@caoutdoorproperties.com)