

Hartland 40 acres

Shasta County, California

\$74,500 | 40.00 Acres

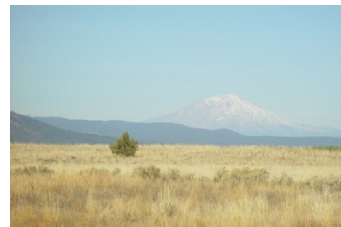
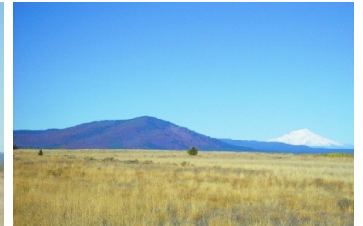
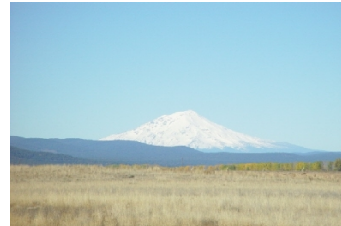
Lot 11 off HWY 299 East
Fall River Mills, California

Spectacular views of Mt. Shasta, Mt. Lassen and wide open spaces. Plenty of room to stretch out and build you dream home. Level to slightly rolling, this is the largest vacant lot for sale between Fall River Mills and McArthur. Very private, surrounded by farm ground and a small ranchette. Close to fishing, hunting and golf. Many recreational opportunities, near many rivers, lakes and s...



PROPERTY HIGHLIGHTS

- Spectacular view of Mt. Shasta and wide open spaces.
- The Fall River Golf and Country Club is just a few miles away, offering 18 holes with lakes and waterfalls. Enjoy a day of golf and relax with a cold beverage on the country club open deck overlooking the falls and golf course.
- The community offers all the amenities you would expect in a small town, plus a hospital, library, movie theater, art gallery, gift shops and public access to



DONNA UTTERBACK

Real Estate Agent

BRE# 01199200

Office: (530) 336-6869

Cell: (530) 604-0700

fallriverproperties@frontiernet.net