

McArthur Two Duplex Units

Shasta County, California

\$550,000 | 1.00 Acres

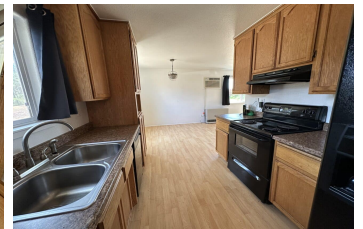
45258-B HWY 299
 McArthur, California

Great investment opportunity. Two duplex units. Four rental homes. Each side is 1370sf with 3 bedrooms and 2 bathrooms. Laundry room and 1 car garage. Also included is a 22 x 30 shop.



PROPERTY HIGHLIGHTS

- Newly painted exterior.
- All units have monitor heaters and wall A/C.
- The rents are from \$850-1000/month



DONNA UTTERBACK

Real Estate Agent

BRE# 01199200

Office: (530) 336-6869

Cell: (530) 604-0700

fallriverproperties@frontiernet.net