

McDonald Estate – Hopland, CA

Mendocino County, California

\$2,200,000 | 16.70 Acres

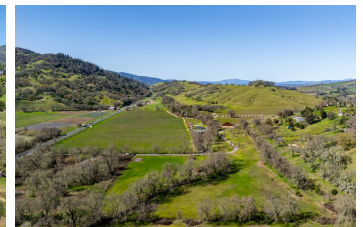
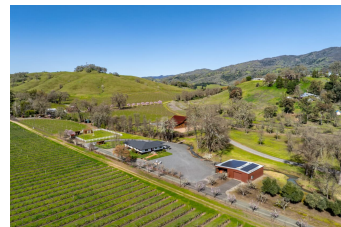
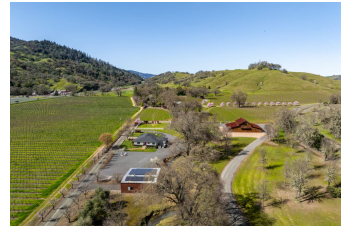
7751 S Highway 101
 Ukiah, California

Tucked away on a serene tree lined lane in the heart of Hopland's wine country and secluded from prying eyes is the 16.7 acre McDonald Estate. The solid metal gate opens inviting you in and revealing the immaculately maintained grounds framed in by towering ancient valley oaks. The west road brings you to the original and recently remodeled 2100 Sq Ft 3 bedroom, 2 bath Farmhouse.



PROPERTY HIGHLIGHTS

- 16.7 acre Legal Parcel, perimeter fenced
- 2100 Sq Ft Farmhouse 3 Bedroom, 2 Bath
- 3900 Sq Ft Lodge with Guest Facility, Bar, Kitchen, Bath, Billiard Parlor, Game Room, Walk-in Gun Safe, 2 Car Garage/Show Room, etc.
- 30 x 40 Workshop with 20 Ft Covered Overhang
- 2 wells -30 GPM & 4 GPM with Pumps and Pressure System
- 17.92 KW Solar System with 64 Panels & Back Up On'Demand Generator (Zero Electric Bill)
- Chicken Coop wit



JIM MARTIN
 Real Estate Agent
 BRE# 01245738
 Cell: (707) 272-5507
molyneauxent@aol.com