

Hidden Springs Ranchland

Lassen County, California

\$565,000 | 195.00 Acres

443-450 Highway 395
Doyle, California

This ranch is a low maintenance property that sub-irrigates in the spring. It has great fencing and solar stock water. Easy access for semi's off US Highway 395. It has an elevated road to the back of the ranch. In the fall the hunting club next door turns on the pumps and the water subs over and fills the pond for great duck and goose hunting.



PROPERTY HIGHLIGHTS

- 195+/- acres
- Great Summer ranch for 70+/- pair
- Steel guard rail fencing
- Solar pump well with loader tire troughs
- Large Powder River corrals
- Duck pond
- Electricity to the corrals
- 195 acre sub irrigated meadow
- Seasonal pond
- Room for pivots
- Could be cut for meadow hay
- One hour from Reno



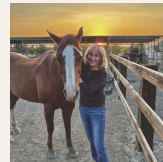
SCOTT ULCH

Real Estate Agent
BRE# 01382010

Office: (775) 424-1952

Cell: (775) 240-3668

scottulch@sbcglobal.net



MARLENE BOGGS

Broker Associate
BRE# 01139616

Cell: (530) 412-2897

marleneboggs@gmail.com



PEGGI VERNON

Real Estate Agent
BRE# 02069320

Cell: (775) 225-8177

PeggiVernon@yahoo.com