

Eastern Foothills of Napa Valley at Sage Canyon

California

\$179,000.00 | 10.74 Acres

Sage Canyon Road/HWY 128
 California

Hard to find smaller parcel in rural Napa County. Approximately 10.74 acres with beautiful views fronting Sage Canyon Road/HWY 128. A place to get away from it all yet still be within minutes to Award Winning Napa Valley Wineries and within just 30 minutes of Napa Valley World Famous Restaurants.

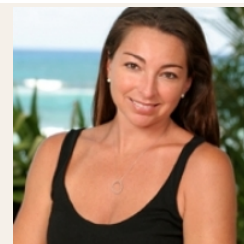


PROPERTY HIGHLIGHTS

- Approximately 10.74 acres in Napa County
- Level to rolling hills to steep terrain
- Beautiful Views
- Minutes to Award Winning Napa Valley Wineries
- Less than 30 minutes to World Famous Napa Valley Restaurants
- Amazing Lake Berryessa near by with activities such as Fishing, Wakeboarding, Paddle Boarding, Kayaking and Hiking



CECE SHORT
 Territory Manager
 BRE# 00783985
 Cell: (707) 337-0224
guidesvc@inreach.com



ROBIN SHORT
 Branch Manager
 BRE# 01890377
 Office: (707) 257-6772
 Cell: (707) 738-3006
shortnapa@gmail.com